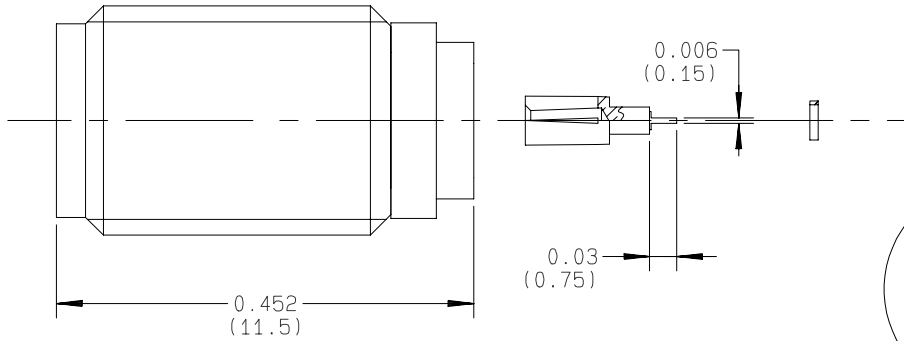


**SCREW ON JACK RECEPTACLE**  
**HERMETIC - WITH AUXILLIARY CONTACT**

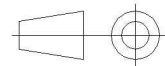
**R125.609.071**

Series : SMA



BREVET  
 85 17 665  
 U.S. PATENT  
 4 720 271

All dimensions are in mm.



COMPONENTS	MATERIALS	PLATINGS (µm)
<b>BODY</b>	<b>STAINLESS STEEL</b>	<b>PASSIVATED .</b>
<b>CENTER CONTACT</b>	<b>BERYLLIUM COPPER</b>	<b>GOLD 1.3 OVER NICKEL 2</b>
<b>OUTER CONTACT</b>	-	-
<b>INSULATOR</b>	<b>PTFE</b>	
<b>GASKET</b>	-	
<b>OTHERS PARTS</b>	<b>BERYLLIUM COPPER</b>	<b>GOLD 1.3 OVER NICKEL 2</b>
-	-	-
-	-	-

Issue : 0431 B

In the effort to improve our products, we reserve the right to make changes judged to be necessary.



**SCREW ON JACK RECEPTACLE**  
**HERMETIC - WITH AUXILLIARY CONTACT**

**R125.609.071**

Series : SMA

**PACKAGING**

Standard	Unit	Other
<b>1</b>	-	<b>Contact us</b>

**SPECIFICATION**

**ELECTRICAL CHARACTERISTICS**

Impedance		<b>50</b> Ω
Frequency		<b>0-27</b> GHz
VSWR	<b>1.10</b> +	<b>0.010</b> x F(GHz) Maxi
Insertion loss		<b>0.07</b> √F(GHz) dB Maxi
RF leakage	- (	<b>10</b> - F(GHz)) dB Maxi
Voltage rating		<b>335</b> Veff Maxi
Dielectric withstanding voltage		<b>1000</b> Veff mini
Insulation resistance		<b>5000</b> MΩ mini

**ENVIRONMENTAL**

Operating temperature	<b>-65/+165</b> ° C
Hermetic seal	<b>10-8</b> Atm.cm3/s
Panel leakage	-

**OTHERS CHARACTERISTICS**

Assembly instruction

Others :

**MECHANICAL CHARACTERISTICS**

Center contact retention		
Axial force – Mating end		<b>27</b> N mini
Axial force – Opposite end		<b>27</b> N mini
Torque		<b>NA</b> N.cm mini
Recommended torque		
Mating		- N.cm
Panel nut		<b>280</b> N.cm
Mating life		<b>0</b> Cycles mini
Weight		<b>2.000</b> g

Issue : 0431 B

In the effort to improve our products, we reserve the right to make changes judged to be necessary.

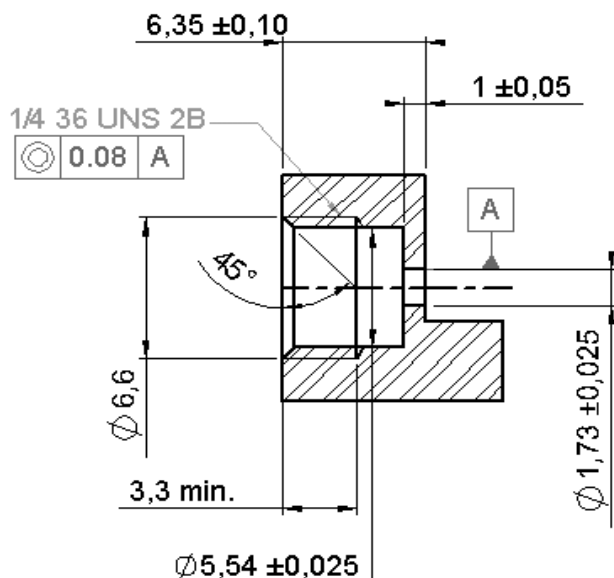


**SCREW ON JACK RECEPTACLE**  
**HERMETIC - WITH AUXILLIARY CONTACT**

**R125.609.071**

Series : SMA

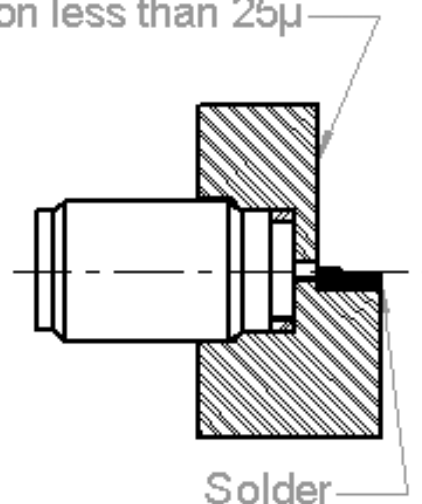
**PANEL DRILLING**



**RECOMMENDED MOUNTING HOLE DETAIL**

Panel deformation less than 25µ

Assemble metal gasket onto connector. Screw both parts into the housing.  
 Tighten the connector up to 280Ncm +or- 10Ncm (use special tooling set RADIALL R282 341).  
 Thus the connexion hermeticity is guaranteed at  $1 \cdot 10^{-8}$ atm. cm<sup>3</sup>/s.  
 Then solder the pin on the track.  
 Be careful not to put too much solder.



Issue : 0431 B

In the effort to improve our products, we reserve the right to make changes judged to be necessary.

